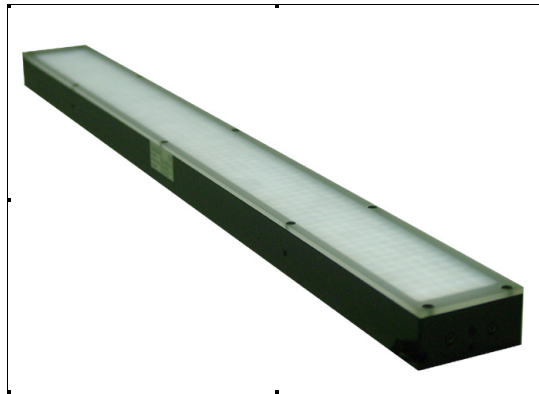
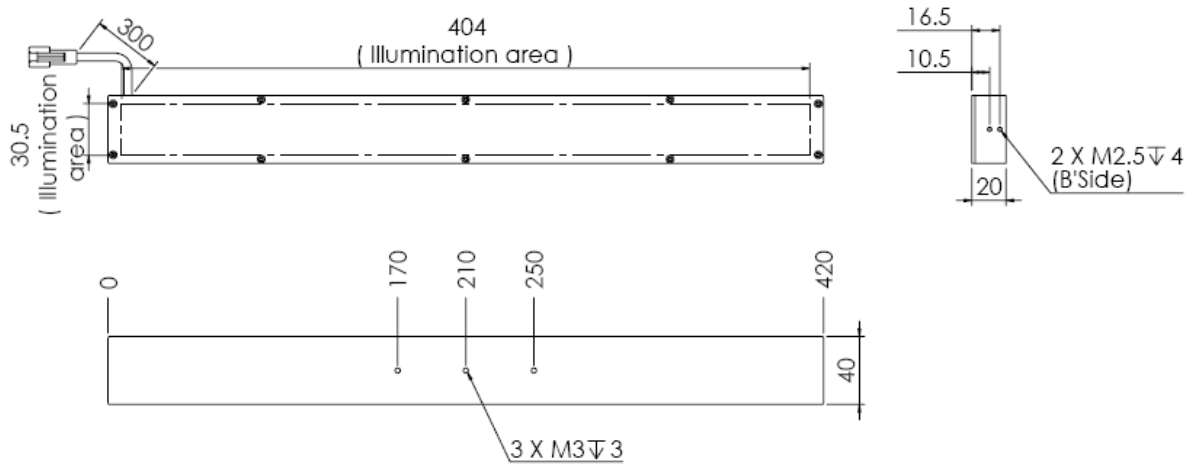


Bar Light

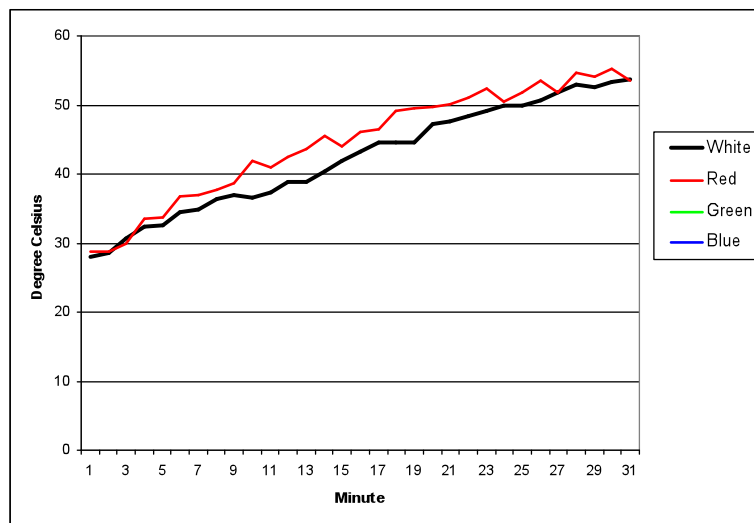
FLDL-i400x30



Drawing



Operating Temperature after 30 minutes



Mechanical Data (TYP)	
Casing Material	Aluminum
Storage Temperature Range	Temp 0-35°C, Humidity 20-85%
Weight	Approx. 450g

Optical Data (TYP)	R24	W	G	B
Illumination (number of LED)	480	480		
Led Color	RED	WHITE	GREEN	BLUE
Wavelength	640nm	xy=(0.31,0.32)	525nm	470nm
Led Package	T1 3mm Clear	T1 3mm Clear		

Electrical Data (TYP)	R24	W/G/B
Operating Voltage	24V ± 2%	24V ± 2%
Reverse Battery Protection	YES	YES
Supply Ripple Voltage	≤ Vs ± 5%	≤ Vs ± 5%
Max. Current Consumption	0.96A	1.60A
Power Consumption	23.04W	38.40W
Trigger Voltage	Continuous= 24V Pulsing 48V 0-10% Duty Cycle	Continuous= 24V Pulsing 48V 0-10% Duty Cycle
Operating after 30 minutes	Approx. 55°C	Approx. 55°C
Additional Cooling Method	Attached to large machine part	
Life span in continuous mode	20,000 hours (drop to 50% intensity) at 25°C	
Life span in strobe light mode	Est. >50,000 hours (drop to 50% intensity) at 25°C	
Connection	JST SMR-03V, 1:+,3:-	JST SMR-03V, 1:+,3:-
Power Supply Selection	PSA-1-24V; PSD-2256-24V; PSD-2256S-48V; LIC-2256-U	PSA-1-24V; PSD-2256-24V; PSD-2256S-48V; LIC-2256-U